

Outreach activities to promote plant health

Melissa Molho

INTRODUCTION

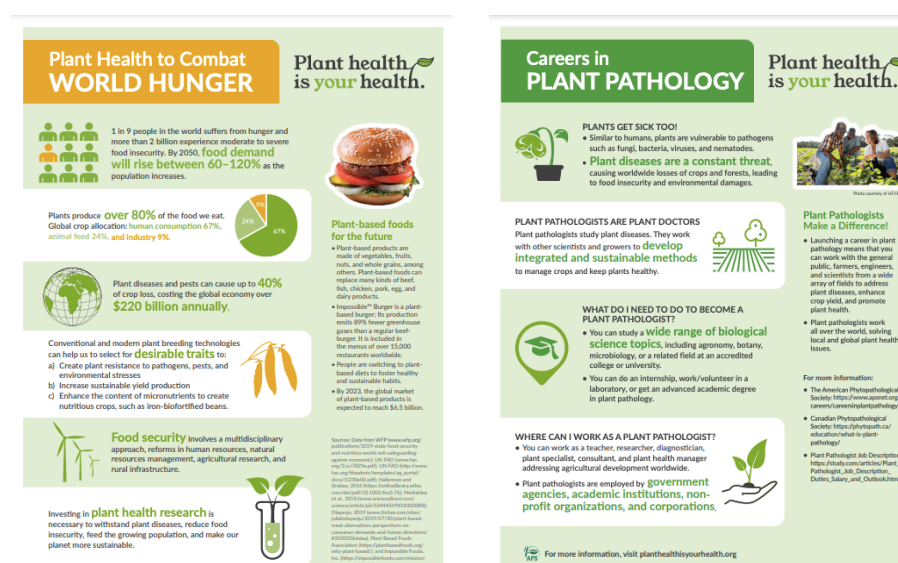
The United Nations declared 2020 as the International Year of Plant Health (IYPH). The purpose was to highlight the impact of plant diseases and pests on food production and the environment. The American Phytopathological Society (APS) developed resources to educate kids and adults about the importance of plant health. To unify the message, the APS created a logo with the words "Plant health is your health" and designed a public website with all the materials.



Plant health
is **your** health.

INFOGRAPHICS

Eleven plant health themes were selected and developed into monthly infographics. The topics included Plant Health to Combat World Hunger, Plant Health in a Changing Climate, and Careers in Plant Pathology. Infographics are published in English, Spanish, Portuguese and some of them in Chinese. They can be printed as handouts or poster size.



PODCASTS

Plantopia podcasts are 20-40 minutes conversations with plant scientists to explore the world of plant health. In the podcasts, people can learn about the story of plant diseases, which pathogens are destroying our crops, and how scientists and farmers are using modern technologies to produce better and safer food.



ACTIVITIES

Coloring pages for kids illustrating farmers, scientists, and plant diseases. Games for students to discover and embrace their inner plant scientists. Collaborations with non-profit organizations like Skype A Scientist to create the Plant Week and connect the public with plant pathologists and their work. YouTube channel with outreach videos and activities.

Plant health
is your health.

Scientists use plants to make
medicine and keep us healthy.



Basil Downey Mildew

Resources:

<https://www.apsnet.org/planthealthisyourhealth/Pages/default.aspx>

Careers in PLANT PATHOLOGY

Plant health
is **your** health.



PLANTS GET SICK TOO!

- Similar to humans, plants are vulnerable to pathogens such as fungi, bacteria, viruses, and nematodes.
- **Plant diseases are a constant threat**, causing worldwide losses of crops and forests, leading to food insecurity and environmental damages.



Photo courtesy of UF/IFAS

PLANT PATHOLOGISTS ARE PLANT DOCTORS

Plant pathologists study plant diseases. They work with other scientists and growers to **develop integrated and sustainable methods** to manage crops and keep plants healthy.



Plant Pathologists Make a Difference!

- Launching a career in plant pathology means that you can work with the general public, farmers, engineers, and scientists from a wide array of fields to address plant diseases, enhance crop yield, and promote plant health.
- Plant pathologists work all over the world, solving local and global plant health issues.

WHAT DO I NEED TO DO TO BECOME A PLANT PATHOLOGIST?



- You can study a **wide range of biological science topics**, including agronomy, botany, microbiology, or a related field at an accredited college or university.
- You can do an internship, work/volunteer in a laboratory, or get an advanced academic degree in plant pathology.

WHERE CAN I WORK AS A PLANT PATHOLOGIST?

- You can work as a teacher, researcher, diagnostician, plant specialist, consultant, and plant health manager addressing agricultural development worldwide.
- Plant pathologists are employed by **government agencies, academic institutions, non-profit organizations, and corporations.**



For more information:

- The American Phytopathological Society: <https://www.apsnet.org/careers/careersinplantpathology>
- Canadian Phytopathological Society: <https://phytopath.ca/education/what-is-plant-pathology/>
- Plant Pathologist Job Description: https://study.com/articles/Plant_Pathologist_Job_Description_Duties_Salary_and_Outlook.html



For more information, visit planthealthisyourhealth.org